

Cami Top
Front (1)
Size M (10-12)
Cut 1 on fold

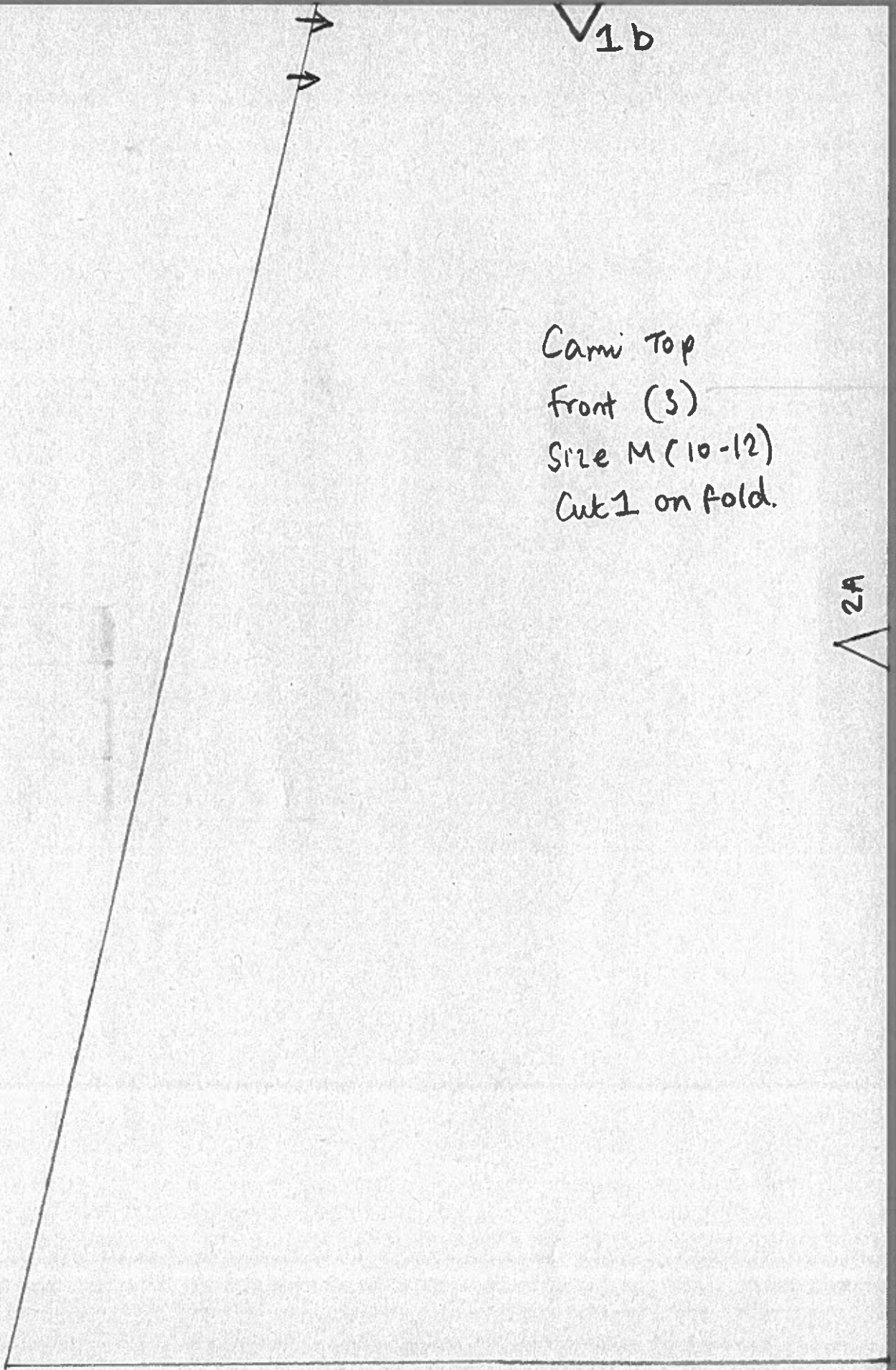
1A

2B

V1b



Cami Top
Front (3)
Size M (10-12)
Cut 1 on fold.



2b

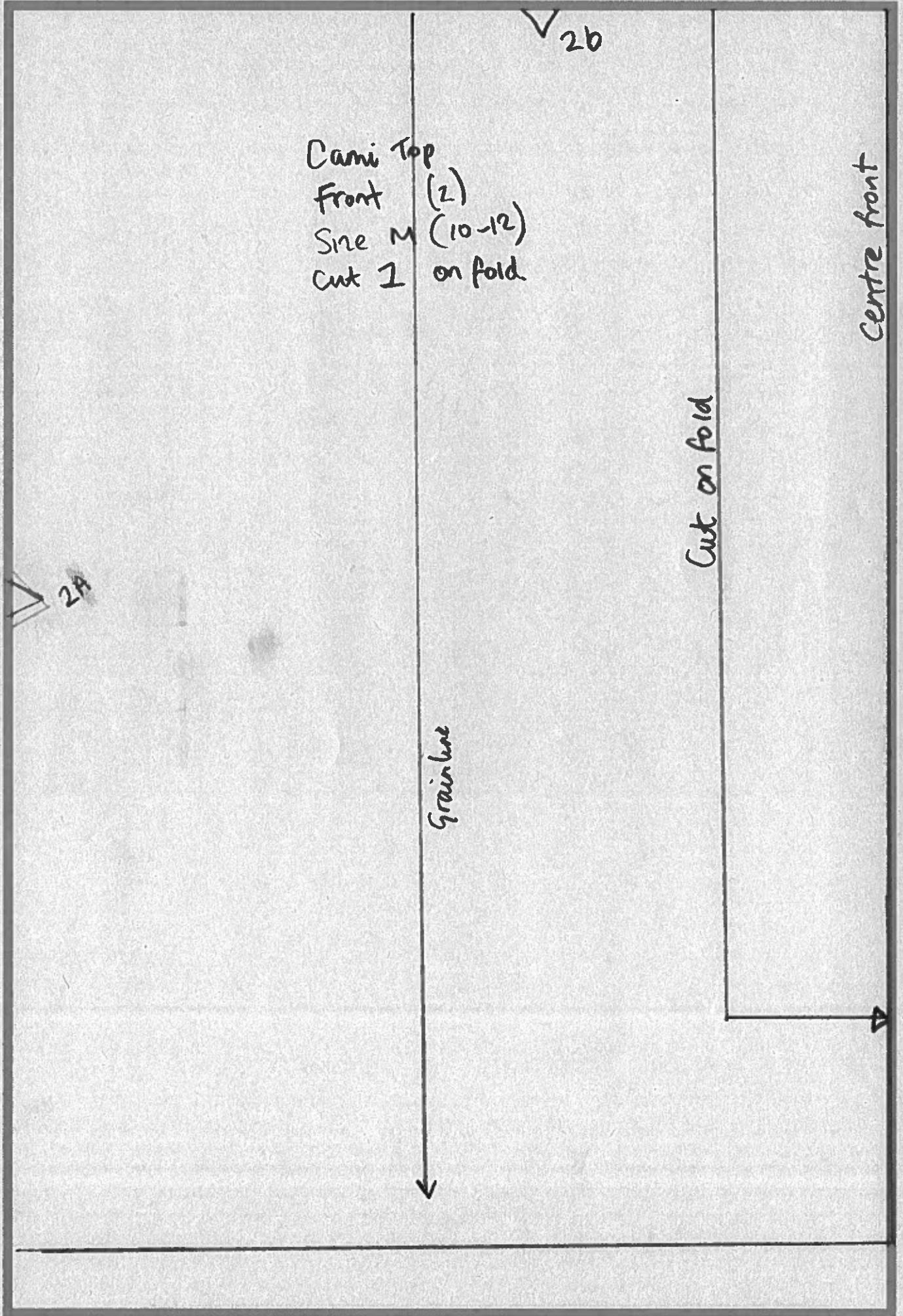
Cami Top
Front (2)
Size M (10-12)
Cut 1 on fold

Centre front

Cut on fold

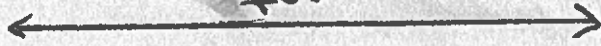
Grainline

2A

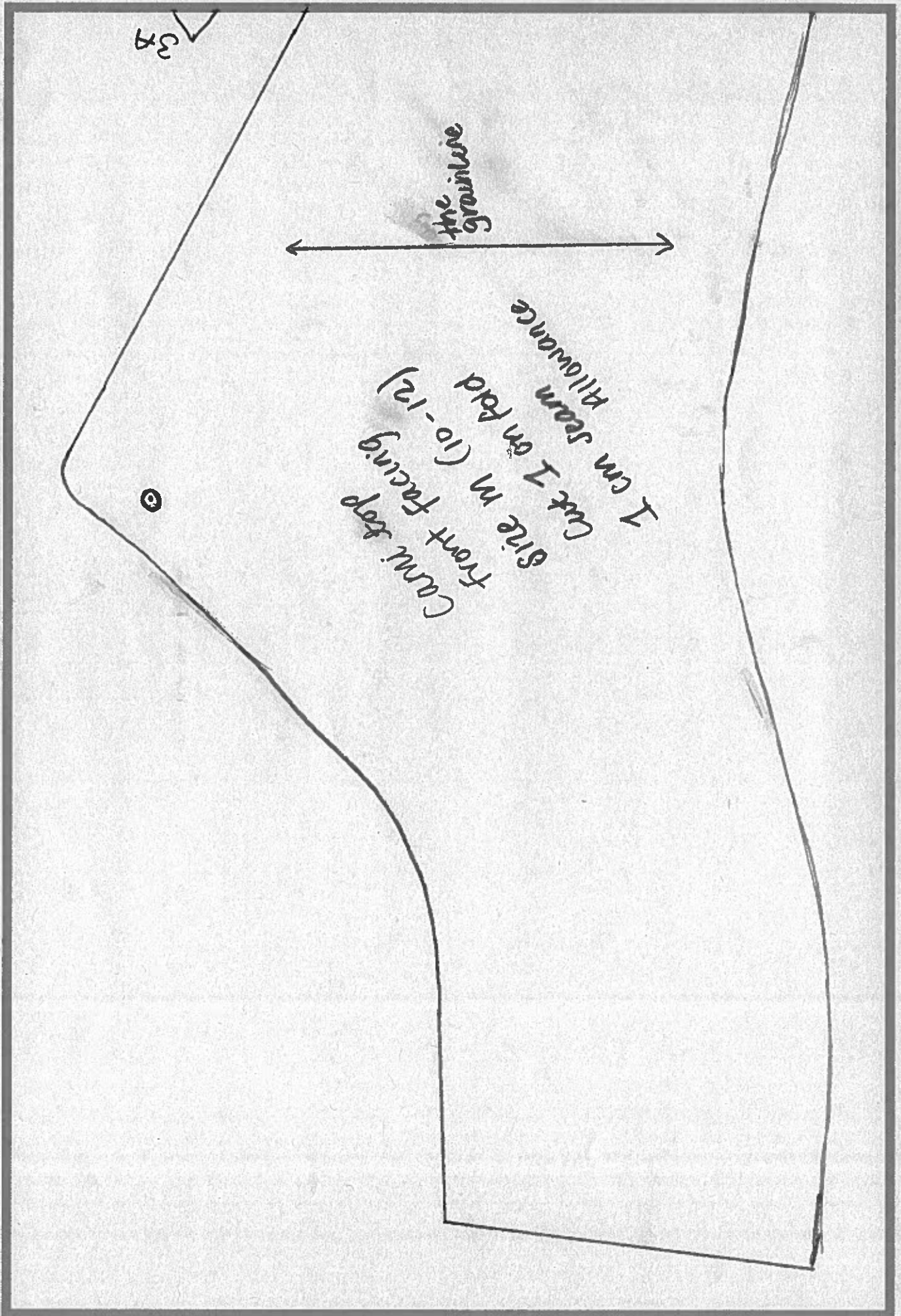


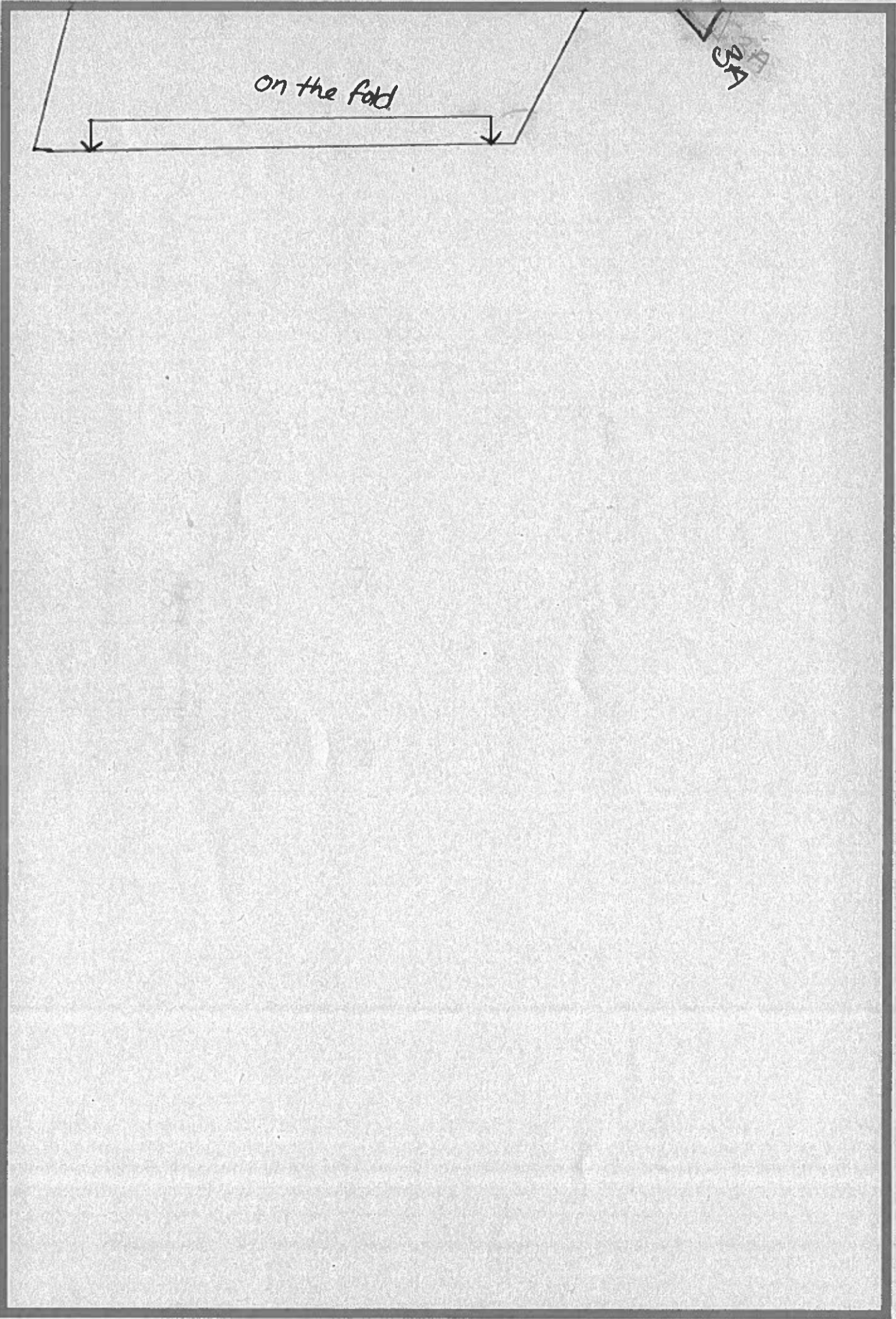
37

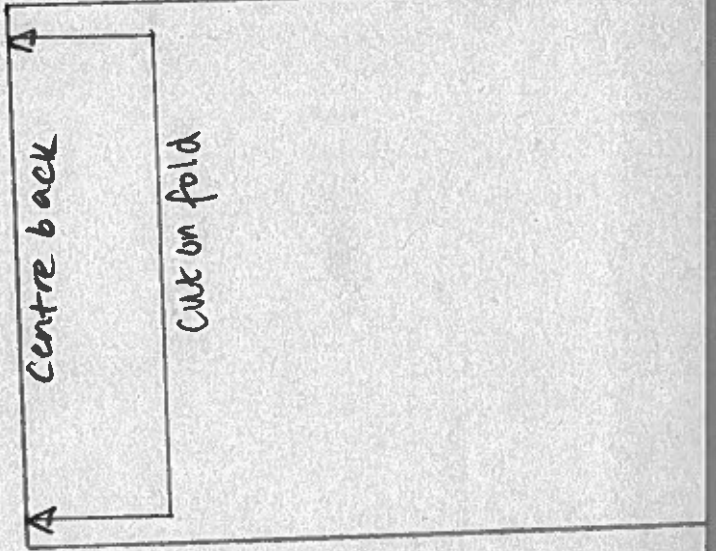
the
grainline



1 cm seam
allowance
Cut 1 on fold
Size M (10-12)
Front Facing
Cowl top



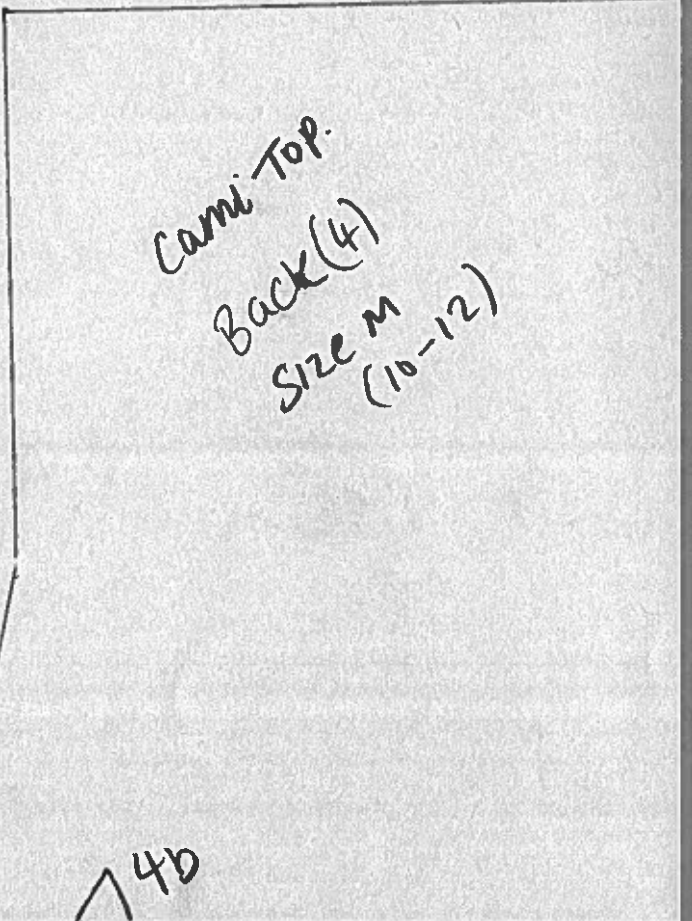




Centre back

Cut on fold

4a



Cami Top.
Back (4)
Size M
(10-12)

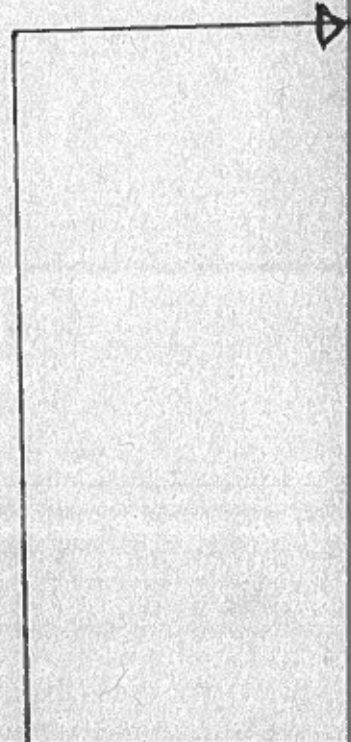
4b

Camie TOP
Back
facing
Size (10-12)
M
cut 1 on fold.



4a

Camie top
Back (1)
Size M
cut 1
on fold



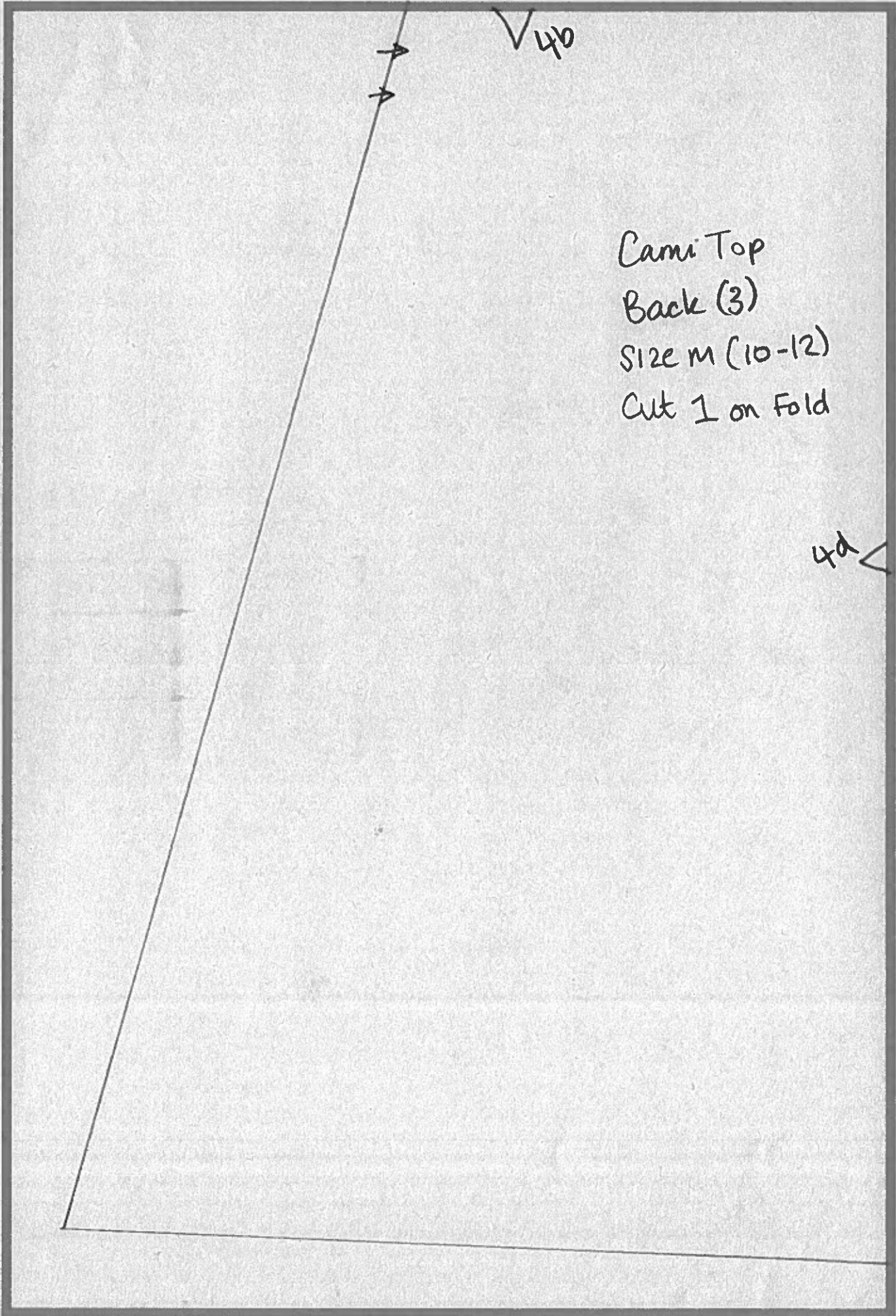
4c

V 40



Cami Top
Back (3)
Size M (10-12)
Cut 1 on Fold

40



4c

Cut on fold.

4e

centre back.

Grainline

Cami Top
Back (2)
size M (10-12)
cut 1 on fold.

4d



4E

